

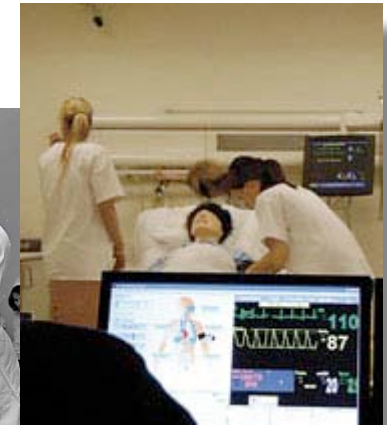
Simulation centres

- what they offer and not.



What is a Simulation centre?

- A facility dedicated to medical education using simulation as the main educational tool

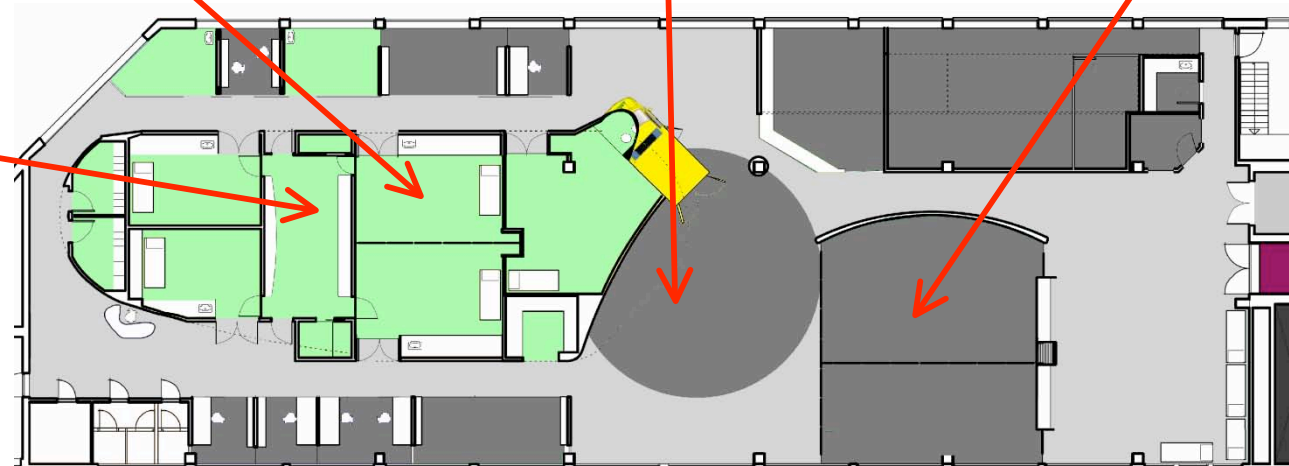


Simulation centre

- Typical characteristics:
 - Affiliated to an educational institution
 - Rooms dedicated to scenario training, simulating a clinical setting
 - Patient simulators of varying complexity
 - A staff of educators
 - Simulation is the main teaching method



- Affiliated to Stavanger University Hospital and University of Stavanger



- Affiliated to Ullevål University Hospital, Oslo, Norway

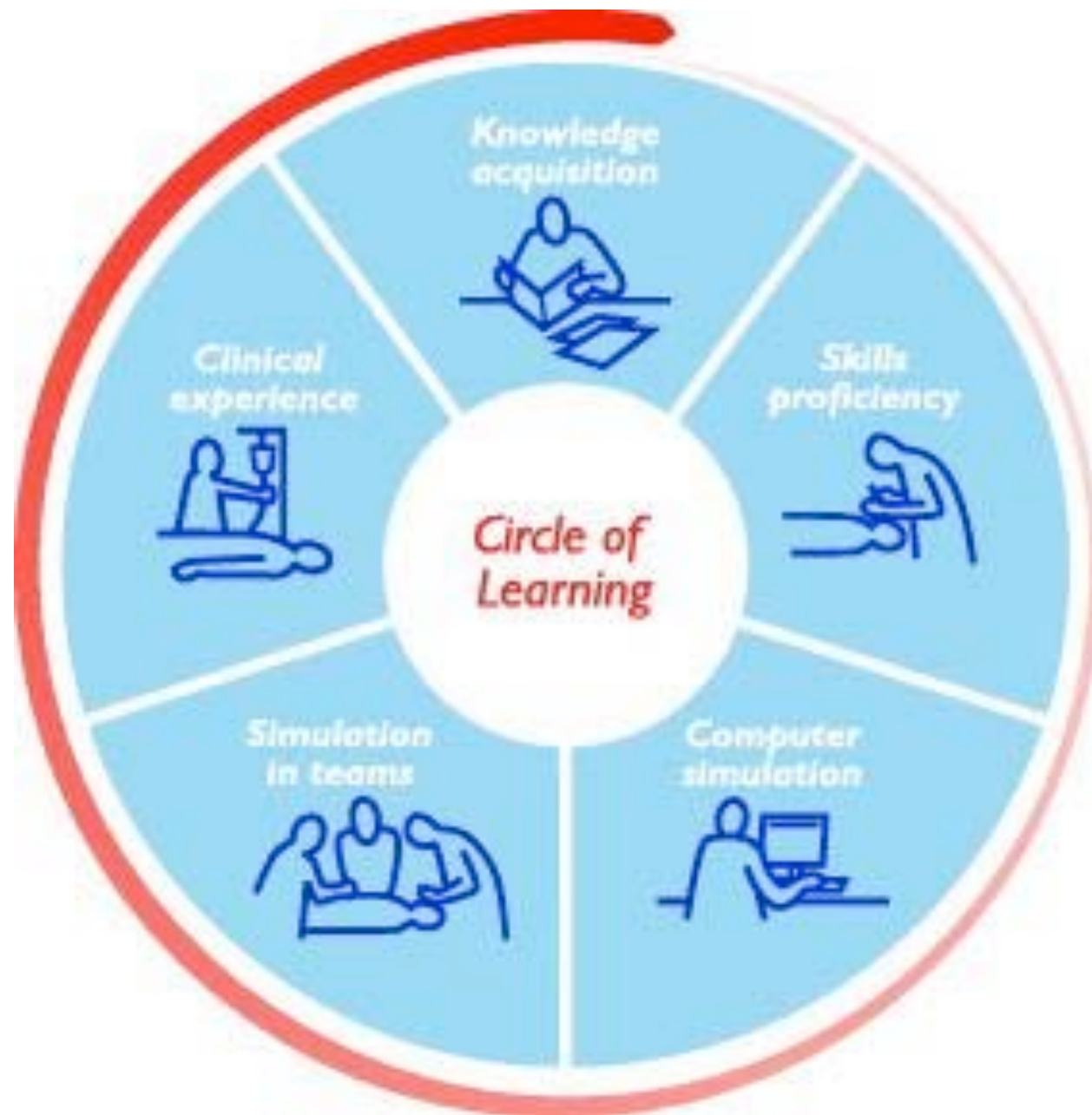




Medical simulation

- Skills training
 - Techniques and equipment
 - SOPs
 - Basic LS techniques
- Decisionmaking
 - PC simulation/ -games
 - Tactical training
- Full scale simulation
 - Team training
 - CRM
 - ...





What can SIM centres offer?

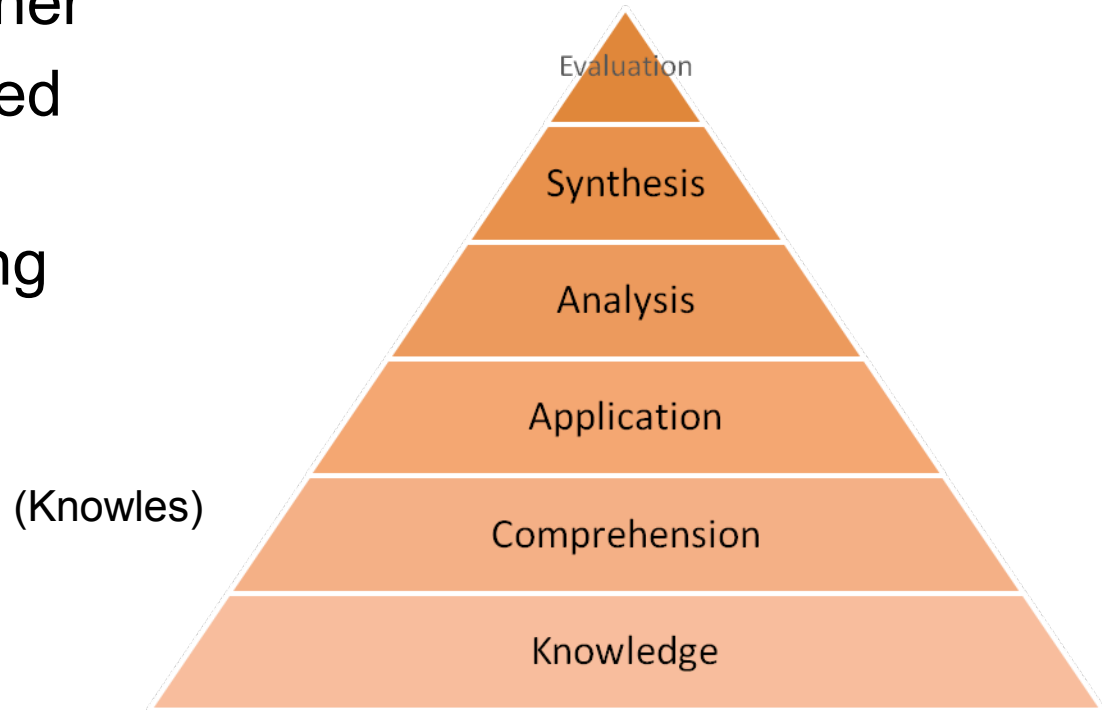
Controlled teaching

or

Pedagogic control

Pedagogic control

- Learning environment for the adult learner
 - A reflective learner
 - Experience based learning
 - Relevant learning
 - Involvement in learning



Blooms Taxonomy

Pedagogic control

- Tailored curriculum
 - Ensure the same level of “experience”
 - Unlimited repetition
 - Repeat as necessary
 - Rare cases and conditions
 - Prepare for the rare, but dramatic events
 - Gain “life-long” experience

Pedagogic control

- Safe training environment
 - No patients harmed as training objects
 - No harm to the student
 - It's safe to make mistakes!
 - Mistakes are powerful teachers!



What else?

- Research
 - Patient safety
 - Implementation
 - Effect of training
 - Pedagogy
 - Teaching methods
 - Debriefing
 - Curriculum development

Limitations & Pitfalls

- Realism
 - It's not real life, but does it have to be?
 - As realistic as necessary
 - Where does the simulation take place?



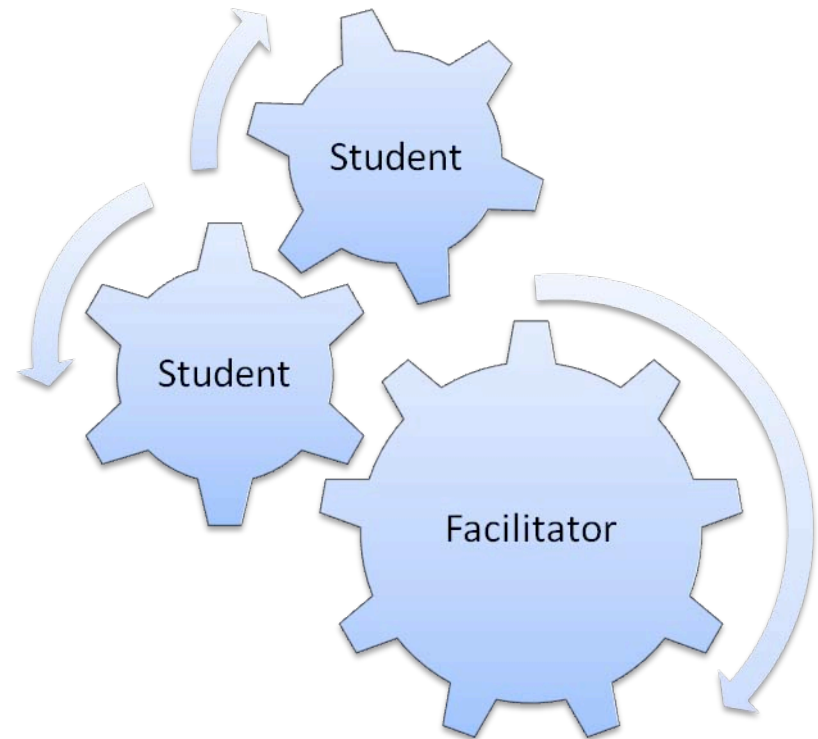
Limitations & Pitfalls

- "Over fidelity"
 - Technique takes control
 - Remember: simulation is a method not a mannequin
- Technical vulnerability
 - More technical equipment = more technicians needed = expensive
 - A technical crash is a lost simulation



Limitations & Pitfalls

- Human factors
 - Students
 - Adaptability
 - Facilitators
 - Competence



Limitations & Pitfalls

- Economy
 - More expensive than traditional learning
 - Time for training = time lost for treating patients = money lost for the hospital



Simulation – does it make a difference?

